

CASTELLE®

White Paper

Castelle Network Fax Servers and FabSoft Reform

Faxing from Form-based Applications with FaxPress™ and FaxPress Premier™

Castelle
855 Jarvis Drive
Morgan Hill, CA 95037
<http://www.castelle.com>

TABLE OF CONTENTS

Executive Summary	2
About Castelle's FaxPress and FaxPress Premier Fax Servers	2
About FabSoft Reform	3
FabSoft Reform and Castelle Fax Server Integration	3
Typical User Flow	3
Features & Benefits of Sending Forms Via Fax	4
Document System Integration	4
Reform's Spooler and Form Designer	5
Reform on the Network	7
Workstation Setup	8
Additional Information and Pre-Sales Support	8

Executive Summary

Castelle network fax server and HP device scan-to-fax integration offers an ideal scan in, fax out solution. Once integrated with the FaxPress or FaxPress Premier, HP's High-End Mono LaserJet, LaserJet Multifunction Printer (MFP) or Digital Sender devices allow users to send paper documents to fax recipients right from the HP scan bed. With scan-to-fax integration, paper documents are converted immediately to electronic files and forwarded to the FaxPress or FaxPress Premier for fax transmission.

With no login required, the Castelle fax server is transparent to the user, and the HP LaserJet, MFP or Digital Sender can function as a virtual fax machine. One of the most outstanding advantages of scan-to-fax integration is that, after a document is scanned, the scanner is immediately free for further use, since all fax retries occur at the FaxPress or FaxPress Premier fax server rather than the scanner.

About Castelle's FaxPress and FaxPress Premier Fax Servers

Castelle's two fax server product lines, the FaxPress and the FaxPress Premier, offer every possible computer-based, network fax option: desktop PC faxing, production faxing, fax and email integration, workflow application integration, as well as tools for developing custom fax applications.

The FaxPress product line provides analog fax servers for small and mid-size organizations. The five FaxPress servers range from an entry-level, single-line unit to a higher-end, eight-line server. FaxPress servers can be added as needed, since automatic load sharing enables multiple units to work together on the same network.

The FaxPress Premier product line, designed for mid-size to enterprise-level organizations, provides unmatched scalability for the growing enterprise. The FaxPress Premier Analog fax servers support 4 fax lines across 4 analog phone lines, with upgrade packages enabling scalable support for 8, 12, or 16 fax lines. The FaxPress Premier Digital fax servers support fractional T1, T1, E1 and ISDN carrier formats. The FaxPress Premier Digital Fractional T1 supports 8 T1 fax channels while the FaxPress Premier Digital T1 supports 24 fax channels across a single T1 line. Upgrade packages enable scalable support for up to 72 fax channels across 3 full T1 boards. For European markets, the FaxPress Premier Digital ISDN supports 4 fax channels across 2 ISDN lines, with upgrade packages enabling scalable support for up to 12 fax channels across 6 ISDN lines. The FaxPress Premier Digital E1 supports 30 fax channels across a single EuroISDN E1 line, with upgrade packages enabling scalable support for up to 90 fax channels across three EuroISDN E1 lines.

Castelle's FaxPress and FaxPress Premier fax servers are currently used in government, manufacturing, financial, automotive, hospitality, construction and health care organizations. Companies of all sizes find the FaxPress and FaxPress Premier fax servers are an ideal way to integrate computer-based, network faxing into office, workflow and messaging applications. Castelle's wide range of APIs means companies can develop and deploy custom fax applications using their choice of operating systems and programming languages. Castelle's server-based rather than per-user based licensing means an unlimited number of users can send and receive faxes at no additional expense.

FaxPress and FaxPress Premier features include:

- Inbound and outbound faxing from within most email applications.
- Document delivery to both fax and email recipients simultaneously
- Faxing straight from desktop applications
- Fax Reporting
- Fax management, transmission tracking, and notification features (i.e. fax history, sender, time sent, destination address, bill-back codes, document delivery status, etc)
- Inbound routing to groups' or individuals' fax or email boxes, shared network folders, or printers
- Scheduled broadcast/batch faxing for reduced document delivery costs
- Fax archiving, eliminating the need to keep faxed copies of documents
- Least-cost fax routing, to minimize telephone charges

Additionally, FaxPress Premier fax servers offer:

- A secure web interface, allowing remote access to end-user and administrative fax functions.
- The FaxPress Premier Web Services SDK, giving developers the ability to create their own 128-bit, SSL encrypted custom fax and production fax applications, and also includes sample clients, with source code provided, written in Java, C++, C#, Visual Basic, and Perl.

For more information on FaxPress and FaxPress Premier fax server features and specifications, see [Additional Information and Pre-Sales Support](#).

About FabSoft Reform

FabSoft Reform is a 32-bit middleware product that seamlessly interfaces Castelle's FaxPress and FaxPress Premier fax servers with any accounting or form-based system. Reform captures print jobs from an application, enhances the information, extracts the necessary fax information and delivers the newly enhanced job to the FaxPress or FaxPress Premier fax server. Reform's form designer allows you to create and enhance your own forms with graphics, line objects, colors, fonts, bar codes etc. The seamless interface to any accounting-oriented system is achieved by using the included capture & driver utilities. Reform requires a Windows 95/98/NT/2000 operating system for the host. Clients can run any operating system, providing a great way to connect your non-Windows clients to the FaxPress or FaxPress Premier. Reform runs in the background, with its processes transparent to users.

FabSoft Reform and Castelle Fax Server Integration

Reform can be configured to send enhanced documents to the FaxPress or FaxPress Premier servers in much the same way it is configured to send documents to a Windows printer driver. To the FaxPress or FaxPress Premier, Reform appears to be a FaxPress client. Cover pages can be defined within each Reform overlay, with subject and message information passed to the cover page. Reform can modify the FaxPress sending options, resolution, user and any other option allowable by Castelle's FaxPress API.

Typical User Flow

The document system generates a document that meets the Reform filter criteria. Reform detects the document, and then processes the document. Reform applies the overlay to enhance the document, extracts all the required fax information and sends the enhanced document and fax information to FaxPress.

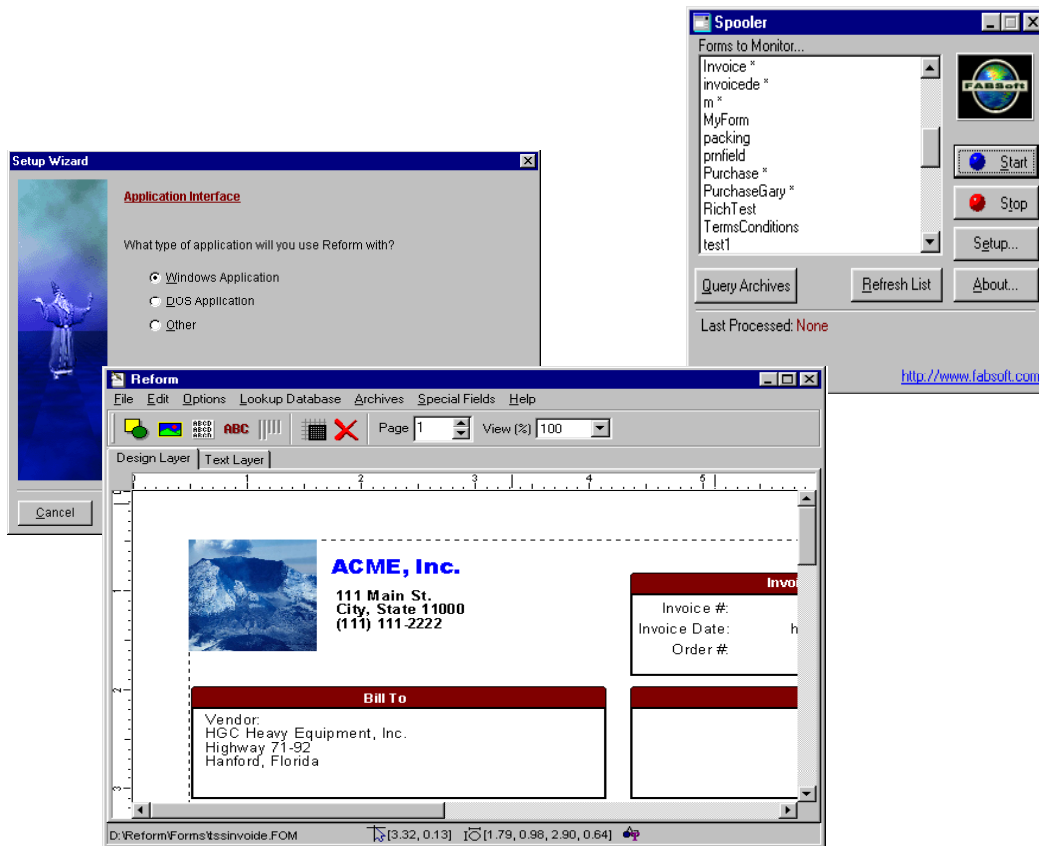
The user only has to trigger the document system to produce the document. The rest of the process happens automatically with no need for user intervention. The fax job will be placed in the user out folder the same way the normal FaxPress clients sends the fax job.

Reform's Spooler and Form Designer

FabSoft Reform is a true 32-bit application that continually looks for document information. When the document information is detected, Reform automatically processes and enhances the document information, and then passes the enhanced document and fax information to the FaxPress or FaxPress Premier seamlessly and automatically.

Reform's spooler and form designer modules perform the information detection and enhancement functions.

- Spooler – This module detects document information, and then processes and sends the enhanced form directly to the FaxPress or FaxPress Premier.
- Form Designer – This module allows users to customize their documents with graphics, logos, line types, objects, fonts, colors, signatures, watermarks, etc. Once the user makes the changes, they are saved to the Spooler. The next time the document is processed the changes will be applied.



Reform's Form Designer is very much like Microsoft PowerPoint, utilizing the same Windows graphic tools and layout functions, and can be used to enhance the visual appeal of documents, giving the original document a new look. The Reform Forms Designer changes the document structure by applying an overlay of graphics, logos, line types, objects, fonts, colors, signatures, watermarks, etc to the retrieved document.

Typical ASCII/Text form, before Reform enhancement:

```

Invoice
Inv#:0274
P.O.#:9321
Date:03/02/00

Bill To:
Bob's Premier Paints
555 North Airport Blvd.
Park Valley, FL 32751


Ship To:
Bob's Premier Paints
555 North Airport Blvd.
Park Valley, FL 32751

-----
Terms      D      Date      Salesperson
Net 30     0

-----
Item Number Description Qty Ship Tax /O Unit Price
-----
1010      B&D Burner Kit      4.0      1.0      15.50
30ft. 5/8 Hse      2.0      0.0      12.95
30ft. 5/8 Hse      2.0      N      25.90
-----
Subtotal      : $72.40
Tax            : $ 4.34
Total         : $76.74

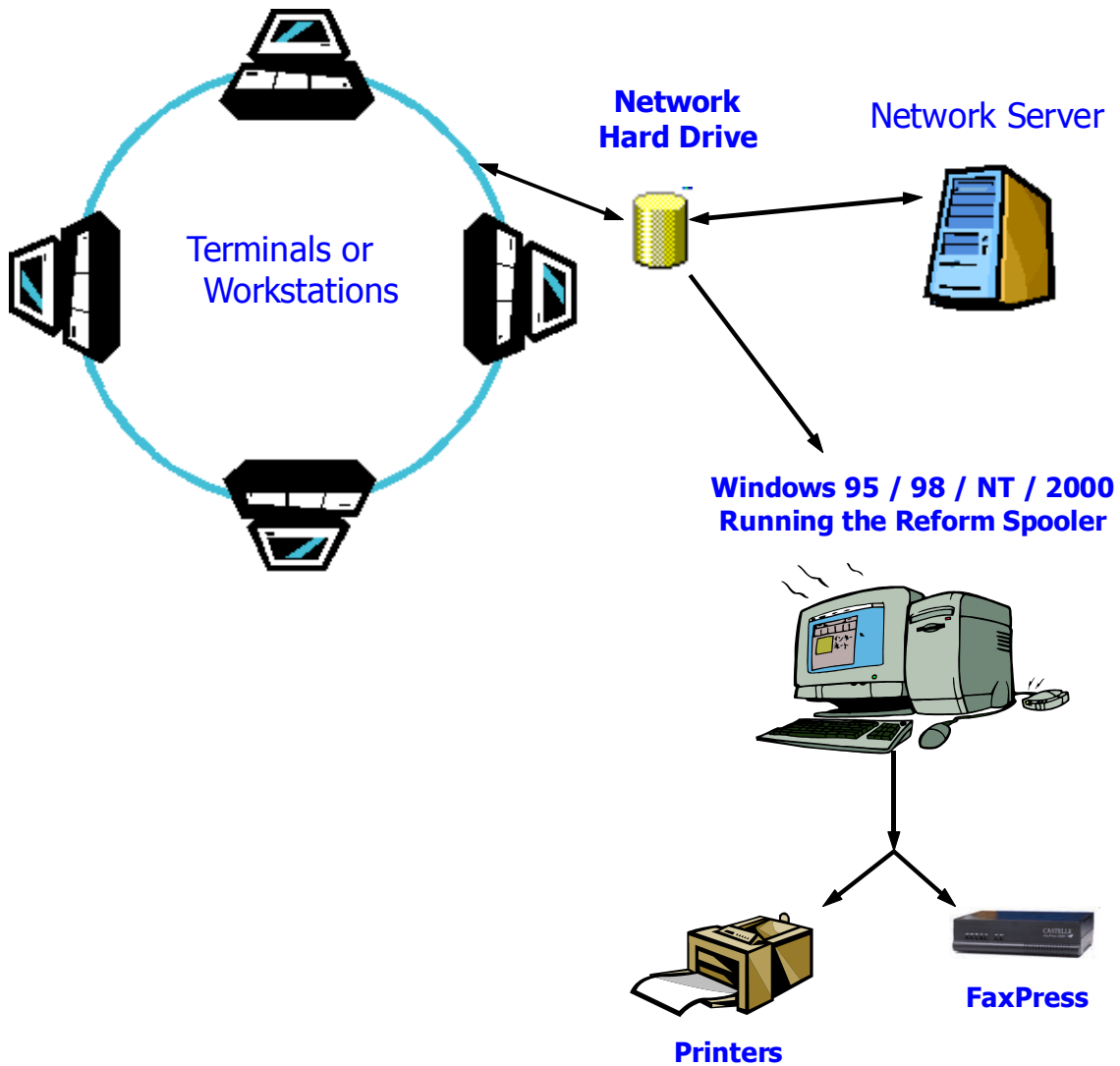
```

Reform-enhanced ASCII/Text form:

Invoice																			
 Resubmit to: FabSoft P.O. 452, Oak Ridge, N.J. 07438 T(888)580-9336 F(973)208-7424		<table border="1"> <tr> <td>Invoice #</td> <td>02745</td> </tr> <tr> <td>P.O. #</td> <td>93214</td> </tr> <tr> <td>Date</td> <td>01/07/2000</td> </tr> </table>			Invoice #	02745	P.O. #	93214	Date	01/07/2000									
Invoice #	02745																		
P.O. #	93214																		
Date	01/07/2000																		
<table border="1"> <tr> <th>Bill to</th> <th>Ship to</th> </tr> <tr> <td> Bob Premier Paints 555 North Airport Blvd. Park Valley, FL 32751 </td> <td> Bob Premier Paints 555 North Airport Blvd. Park Valley, FL 32751 </td> </tr> </table>		Bill to	Ship to	Bob Premier Paints 555 North Airport Blvd. Park Valley, FL 32751	Bob Premier Paints 555 North Airport Blvd. Park Valley, FL 32751														
Bill to	Ship to																		
Bob Premier Paints 555 North Airport Blvd. Park Valley, FL 32751	Bob Premier Paints 555 North Airport Blvd. Park Valley, FL 32751																		
<table border="1"> <tr> <th>Terms</th> <th>Due Date</th> <th>Ship Date</th> <th colspan="2">Salesperson</th> </tr> <tr> <td>Net 30</td> <td>04/02/97</td> <td>03/01/97</td> <td colspan="2">John</td> </tr> </table>	Terms	Due Date	Ship Date	Salesperson		Net 30	04/02/97	03/01/97	John										
Terms	Due Date	Ship Date	Salesperson																
Net 30	04/02/97	03/01/97	John																
<table border="1"> <tr> <th>Description</th> <th>Barcode 3 of 9</th> <th>Shipped</th> <th>Unit</th> <th>Ext. Price</th> </tr> <tr> <td>B&D Burner Kit</td> <td>1010</td> <td>3</td> <td>15.50</td> <td>46.50</td> </tr> <tr> <td>30ft. 5/8 hose</td> <td>1012</td> <td>2</td> <td>12.95</td> <td>25.90</td> </tr> </table>	Description	Barcode 3 of 9	Shipped	Unit	Ext. Price	B&D Burner Kit	1010	3	15.50	46.50	30ft. 5/8 hose	1012	2	12.95	25.90				
Description	Barcode 3 of 9	Shipped	Unit	Ext. Price															
B&D Burner Kit	1010	3	15.50	46.50															
30ft. 5/8 hose	1012	2	12.95	25.90															
On all past due accounts 1.5% Interest charge added per month minimum charge \$10.00				<table border="1"> <tr> <td>Tax</td> <td>4.34</td> </tr> <tr> <td>Total</td> <td>\$76.74</td> </tr> </table>	Tax	4.34	Total	\$76.74											
Tax	4.34																		
Total	\$76.74																		

Reform on the Network

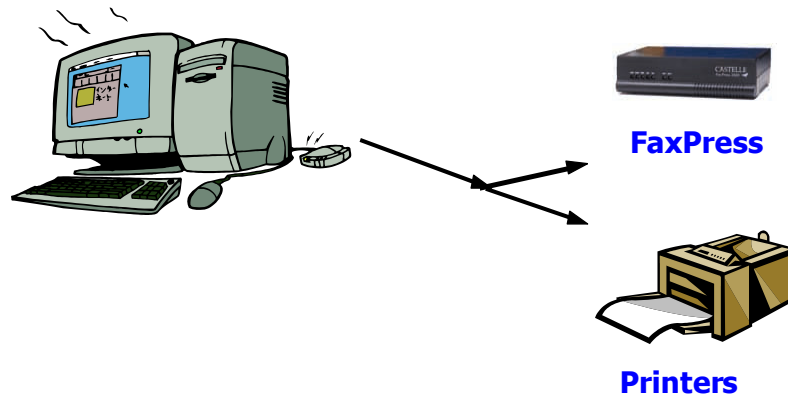
The Reform Spooler can be configured to monitor any directory (on the computer that the Spooler program is installed on) that it has access rights to. This means any network operating system can create an ASCII/Text file for the computer running the Reform Spooler and the Reform Spooler can access it. Reform can also be configured to then process the file and automatically pass it on to the FaxPress or FaxPress Premier.



Workstation Setup

For users who routinely need to customize Reform settings for each fax job, it is sometimes necessary to install the Spooler on their workstation.

Windows 95 / 98 / NT / 2000 Workstation Running the Reform Spooler



Additional Information and Pre-Sales Support

Additional technical details on specific integration tips and configuration can be found on the Castelle Support site at [http: www.castelle.com/support](http://www.castelle.com/support). If you need additional, more detailed information, feel free to contact the Castelle sales staff. The Castelle sales staff is available to answer technical questions you may have regarding the Castelle fax server products, or for questions regarding trade-in options. For an in-depth comparison of the FaxPress Premier and FaxPress product lines, refer to Castelle's network faxing white paper, **Network Faxing with FaxPress™ and FaxPress Premier™: Which Castelle Fax Server Is Right For You?**

CASTELLE®

Castelle Corporate Headquarters

855 Jarvis Drive, Suite 100

Morgan Hill, CA 95037

USA

Tel: 408-852-8000 or 800-289-7555

Fax: 408-852-8100

E-mail: sales@castelle.com

Web: www.castelle.com

© 2004 Castelle. This document is provided for informational purposes only.

Castelle is a registered trademark of Castelle. All other brand names are trademarks or registered trademarks of their respective holders.