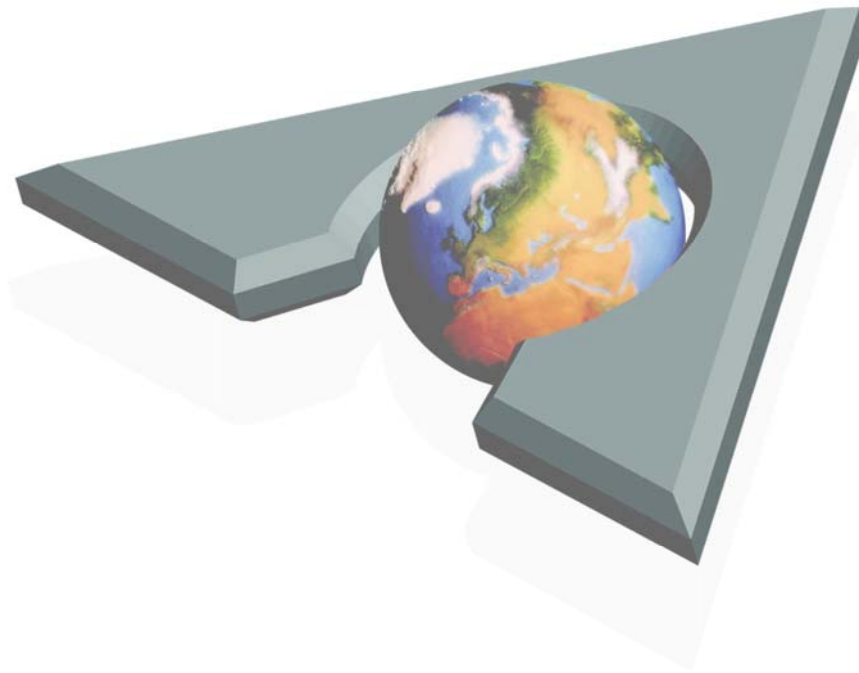


Castelle Network Fax Servers: The All-in-One Fax Solution for Business and Enterprise

Email Integration for Microsoft Exchange

FaxPress Plus Exchange Connector and Microsoft Exchange Server 2007



CASTELLE®

Executive Overview _____ 2

Who Should Read This Document? _____ 2

FaxPress Plus Servers and Email Integration for Exchange Server 2007 _____ 3

 Administering the FaxPress Plus Exchange Connector and Email Gateway _____ 5

Sending Faxes _____ 6

Receiving Faxes _____ 6

Server-side vs. Client-side Email Integration Solutions _____ 7

Pre-sales Support and Additional Information _____ 7

Additional Information and Pre-Sales Support _____ 7

Executive Overview

Castelle's Email Gateways provide a variety of fax and email integration options for the FaxPress Plus product line, which includes the FaxPress Premier, FaxPress Desktop, FaxPress Enterprise and FaxPress Enterprise Redundant families of network fax servers. Serving as a link between the Castelle fax server and your network's mail server, the Gateways allow fax messages to be sent and received as easily as email, right from the user's mail client. Castelle's Email Gateways provide email integration solutions for most]Microsoft Exchange Server 2007 and Outlook. Castelle's email integration solutions are standard, no-charge features for the FaxPress Plus product line.

Your organization's email environment will determine the email integration option you decide to implement. The FaxPress Plus product lines provide reliable and efficient server-based email integration solutions for fax-enabling Microsoft Exchange Server 2007. The Exchange Server 2007 Connector and Email Gateway for FaxPress Plus enable inbound and outbound faxing through Exchange Server 2007, as well as synchronizing of fax server and Exchange Server 2007 user databases. Offering quick and convenient server-side network faxing deployment, with no client software to install, these email integration options are especially well suited to enterprise Exchange Server 2007 environments with a large number of users.

With the Exchange Server 2007 Connector and Email Gateway, familiar email commands are used to create, address, and send faxes, making fax messaging as simple as sending an email. Attachments are rendered into fax file format for most applications, allowing attached files to be sent to fax and email recipients simultaneously. The Exchange Server 2007 Connector and Email Gateway's fax features are available to both local and offsite FaxPress Plus users. Castelle's FaxPress Plus fax forms for Exchange Server 2007 provide further simplified fax messaging, integrating custom fax interfaces into the existing Outlook client.

The Exchange Server 2007 Connector and Email Gateway are similar in operation, although the implementation is different. Both solutions consist of a connector and a gateway. The Exchange Connector is installed from the product CD and runs on the Exchange 2007 server. The Email Gateway is an embedded service that is enabled and run on the FaxPress Plus server.

Castelle's email integration solutions for Microsoft Exchange Server 2007 are standard features for the FaxPress Plus product line. If you'd rather not have any fax-related services running on your Exchange 2007 server, but would still prefer a server-based solution rather than the client-based Outlook Direct, see the Email Integration for SMTP Mail Systems White Paper.

Who Should Read This Document?

Network Administrators, IT Managers, Systems Integrators and consultants who will be implementing a FaxPress Plus network fax server in a Microsoft Exchange Server 2007 environment.

FaxPress Plus Servers and Email Integration for Exchange Server 2007

FaxPress Plus email integration for Exchange Server 2007 is a two-part solution consisting of a connector that runs on the Exchange Server 2007, and an embedded gateway that runs as a service on the FaxPress Plus server. The FaxPress Plus server's Exchange Connector and embedded Email Gateway work together to enable the FaxPress Plus server's integration with your Exchange Server 2007.

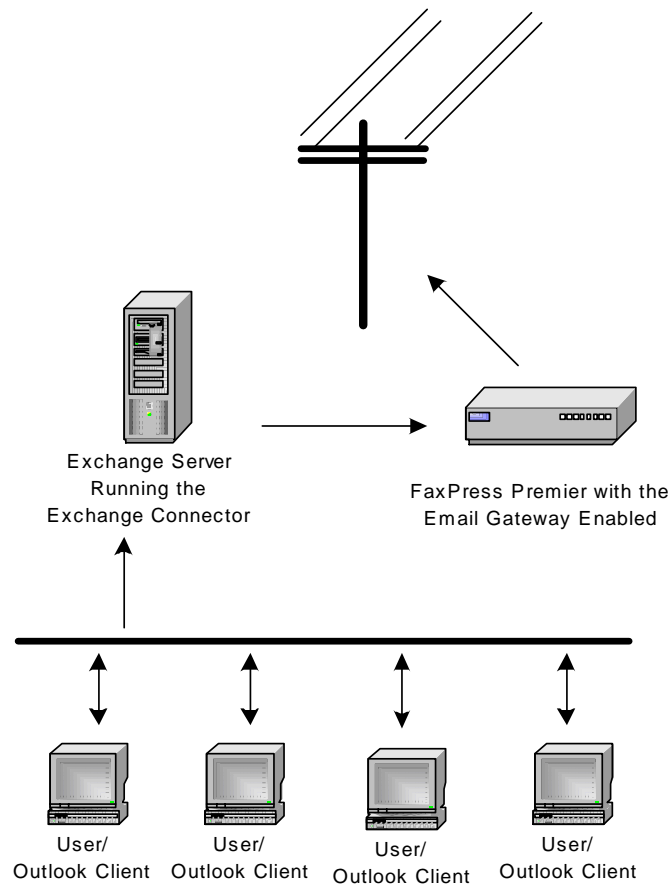
The **Exchange 2007 Connector**, installed from the FaxPress Plus 5.x CD onto the Exchange server, acts as a message transport agent between the Exchange server and the Email Gateway, scanning the Exchange server and forwarding all fax messages to the Email Gateway. The Connector also provides fax-addressing templates for Exchange users. The Connector consists of a service and a connector object, allowing administration of the Exchange Connector itself and the Gateway through the Exchange server administration utility, Exchange Manager.

The Exchange Connector supports Exchange Server 2007 in a Windows NT or Windows 2003 environment. The Exchange Server 2007 Connector may also be installed in an Exchange 2007 cluster server environment. The Exchange Connector can also read a user list from NT/Win2000 server or Active Directory and synchronize it with FaxPress Plus.

The **FaxPress Plus Email Gateway** service converts attached files to faxable images by invoking a background printing of attachments. Easily enabled from the FaxPress Plus server's Embedded Services folder, the FaxPress Plus Email Gateway converts your fax messages' attached files to faxable format, then passes them to the FaxPress Plus server's outgoing queue for processing. The Gateway relieves the Exchange 2007 Server of the resource-consuming processes involved in converting document attachments to faxable format, off-loading the processor-intensive job of this file conversion, which, run on the Exchange Server 2007, might compromise performance.

The Gateway opens the file in its native application, then prints to a TIF file, a format the FaxPress Plus server can process and fax. The Gateway uses Microsoft OLE in the conversion of document attachments to faxable format. OLE requires that all applications associated with your Exchange users' file attachments be installed on the FaxPress Plus server. To prevent failed file attachments, software application versions should be consistent across the network.

The following illustration shows how the FaxPress Plus server's Exchange Server2007 Connector passes attachments to the Email Gateway, which processes the messages for the Exchange server, then passes them on to the FaxPress Plus server.



**Network with FaxPress Plus Server,
Exchange Connector and Embedded Email Gateway**

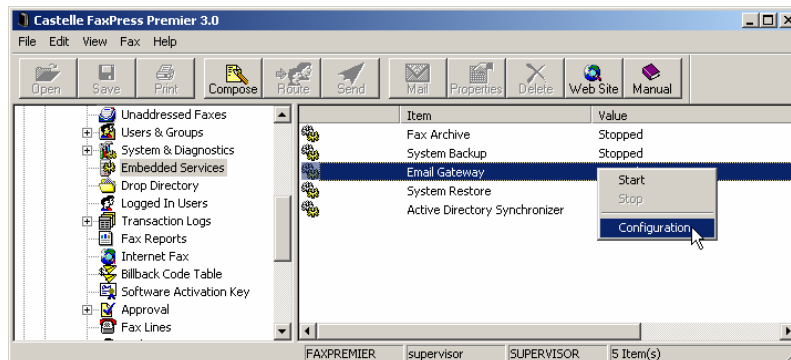
Administering the FaxPress Plus Exchange Connector and Email Gateway

The FaxPress Plus Exchange Connector and Email Gateway provide convenient centralized user management and administration through the Exchange 2007 administration utilities. The Exchange Connector administration utility is accessible from Exchange Manager utility.

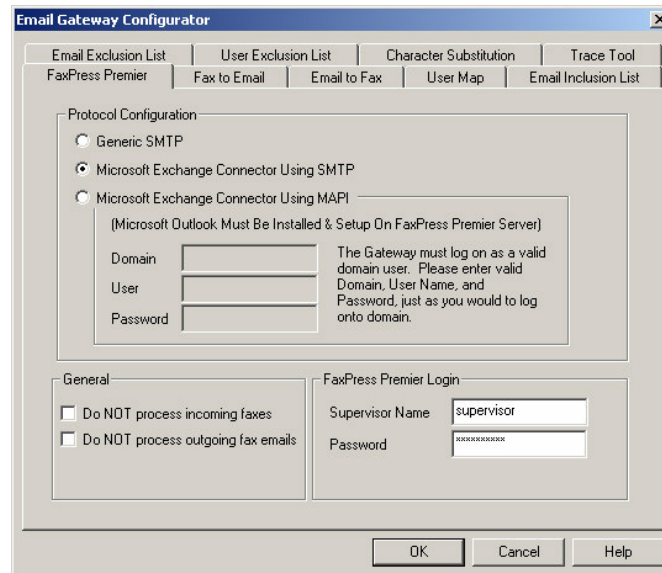
The Exchange Connector administration utility displays all FaxPress Plus servers running the Email Gateway, allows remote access to the Gateway configuration utility, and displays the Exchange Connector machine name. The Exchange Connector administration utility also provides Delivery Restrictions that enable the administrator to allow or deny users the ability to send and receive faxes with the Exchange Connector, as well as a Queues list to view the Exchange Connector's list of outgoing fax jobs.



The FaxPress Plus server's Email Gateway is started, stopped and configured from the Embedded Services folder on the FaxPress Plus server.



The FaxPress Plus server's Email Gateway Configuration utility, accessed from the Embedded Services folder, is used to configure and administer the Gateway. The windows-based Configuration utility provides an efficient, centralized way to manage your network's fax messaging, allowing you to register the FaxPress Plus server, for use with the Exchange Server 2007 Connector, configure incoming and outgoing fax transmission parameters, and map Exchange email database to the FaxPress Plus user database, enabling integration of the two databases. The Configuration utility also includes ways to enable or disable access to the FaxPress Plus server, set up load sharing, enable Trace files and test communication status.



Sending Faxes

The Exchange Server 2007 Connector allows users to send faxes as easily as email messages, right from the Outlook inbox. The message must be addressed to the recipient's fax number. Addressing can be done manually using the Exchange Connector's manual addressing format or the FaxPress Address template, or by utilizing the Exchange Connector's address book and contact list integration. After addressing the message and composing the cover page/email message, the sender can attach files and send the message. Attachments are rendered into fax file format, allowing the user to send attached files to both fax and email recipients simultaneously.

Additionally, documents can also be sent directly from most third-party applications, or by using Castelle's FaxPress fax forms for Exchange. The fax forms offer custom fax interfaces integrated into the existing Outlook client. Using the FaxPress forms for sending faxes is optional, but ideal if the sender would like to specify a variety of fax job parameters.

Receiving Faxes

If the phone system supports some form of automatic routing, such as DID (Direct Inward Dialing), the Exchange Connector will route incoming faxes directly to the specified FaxPress Plus user's mailbox. The Exchange Server 2007 Connector monitors the FaxPress Plus server for incoming faxes and, when a new fax arrives, checks its User

Map to determine where to send the email notification. Depending on how the Exchange Server 2007 Connector is configured, the fax will either be attached to the email notice or can be viewed through the FaxPress Plus client application.

If the phone system does not support automatic routing, the Exchange Connector will place incoming faxes in the default unaddressed mailbox, or an assigned line user's mailbox, where the faxes can be manually routed to the recipient's email inbox.

Server-side vs. Client-side Email Integration Solutions

For enterprises running an Exchange 2007 server with a large number of users, the server-based Exchange Server 2007 Connector and Email Gateway email integration solution is ideal. The Exchange Connector and Email Gateway option is also ideal for remote, dial-up or Virtual Private Network connections. The Exchange Connector/Email Gateway requires one-time deployment on the server side only, and consequently is ideal for large enterprises where client installations on individual workstations are inconvenient.

For smaller environments without an Exchange server, and whose users do not require remote, dial-up or Virtual Private Network connections, the client-based Outlook Direct is ideal. For information on Outlook Direct, please refer to the Email Integration for Outlook Direct white paper.

Or, if you'd rather not have any fax-related services running on your Exchange server, but would still prefer a server-based solution rather than the client-based Outlook Direct, see the Email Integration for SMTP Mail Systems White Paper.

Pre-sales Support and Additional Information

For more help determining which email integration option will best serve your purposes, Castelle sales staff is available to answer any questions you may have. For information on Outlook Direct, please refer to the Email Integration for Microsoft Outlook White Paper. For more information on the Email Gateway for Generic SMTP email integration option, please refer to the Email Integration for SMTP Mail Systems White Paper.

Additional Information and Pre-Sales Support

Additional technical details, integration tips and configuration can be found on the Castelle Support site at <http://www.castelle.com/support>. If you need additional information to determine exactly which automatic fax routing configuration will work for you, feel free to contact Castelle Sales at (800) 289-7555 or email sales@castelle.com. Castelle Sales is available to answer technical questions you may have regarding the Castelle fax server products or questions regarding fax server trade-in options. For more information on the FaxPress Premier and FaxPress product lines, please refer to the additional Castelle white papers at <http://www.castelle.com/products/whitepapers.htm>.

CASTELLE®

Founded in 1987 and headquartered in Morgan Hill, California, Castelle develops office automation systems that allow organizations to easily implement faxing over local area networks and the Internet. Whether it's a small business or a large enterprise, Castelle network fax servers are tailored to meet the needs of any organization. Castelle products are easy to use and maintain, and provide an economical way for companies to share resources over the network. Our products are used by Fortune 1000 companies and small to medium-sized businesses, and are available through a worldwide network of distributors, value-added resellers, systems integrators and e-commerce retailers.

Castelle Corporate Headquarters

855 Jarvis Drive, Suite 100

Morgan Hill, CA 95037, USA

Tel: 408-852-8000 or 800-289-7555

Fax: 408-852-8100

E-mail: sales@castelle.com

Web: www.castelle.com

© 2007 Castelle. This document is provided for informational purposes only.

Castelle is a registered trademark of Castelle. All other brand names are trademarks or registered trademarks of their respective holders.