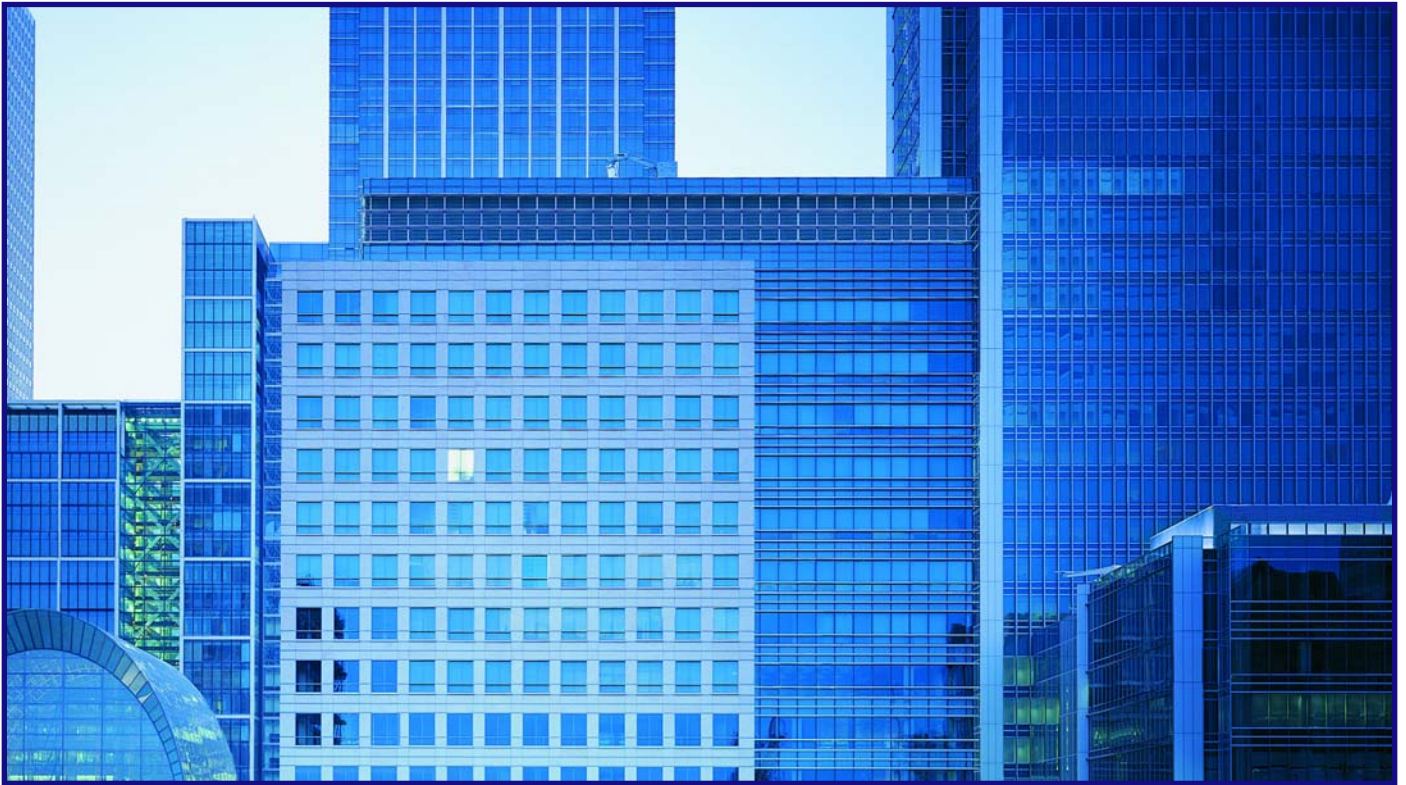


# FaxPress™ & FaxPress Premier™

*Network Fax Servers for Business and Enterprise*



**A New Generation of Network Fax Servers That Offer Instant ROI  
At All Levels of Implementation, From Small Offices and  
Workgroups to Enterprise-level Applications**



**CASTELLE®**



Any organization still relying on a stand-alone fax machine is all too familiar with the frustrations of manual faxing: the failed transmission attempts, the line busy signals, the time spent waiting for faxes to send. . . and resend.

Add to that the time spent waiting by the fax machine for the arrival of important or confidential faxes, the time spent troubleshooting paper jams, the time spent apologizing to customers for misplaced faxes, and the labor-intensive, error-filled manual faxing process soon reveals itself to be more than just an inconvenience. Compromised customer service, inefficiency, lost productivity -- manual faxing ultimately amounts to a huge waste of time, money, and resources.

**Castelle Network Fax Servers -- The Network Faxing Alternative**

Castelle's two fax server product lines, FaxPress and FaxPress Premier, offer your organization every possible computer-based, network fax option: desktop PC faxing, production faxing, fax and email integration, workflow application integration, as well as tools for developing custom fax applications.

**Save Time, Save Money**

Whether you choose a fax server from Castelle's FaxPress or FaxPress Premier product line, you can expect reduced communication costs, accelerated processing time, and more streamlined, higher quality communication. Offering straightforward integration with virtually all computing applications, messaging environments and telephony interfaces, the FaxPress and FaxPress Premier product lines provide network fax solutions tailored to meet the needs of any organization, whether it's a small business or a large enterprise with thousands of users.

**An Integrated Fax Solution**

A market leader in network fax solutions, Castelle provides an economical way for companies to integrate fax into desktop, email and back-end applications. No more walking to the fax machine or waiting around for confidential faxes. The plug-&-forget nature of Castelle products means FaxPress and FaxPress Premier fax servers come with all the necessary hardware and software and do not require per user licenses. That's why network administrators find FaxPress an easy-to-install and easy-to-manage

server appliance that saves your company time and money.

**Expandable Product Line**

Designed as a departmental or workgroup fax server, FaxPress offers a scalable fax solution ranging from an entry-level, single-line unit to a high-end, 8-line unit. Castelle's new FaxPress Premier, designed for enterprise-level applications, offer 8 to 16 analog fax lines, or up to 90 channels on a digital E1 or up to 12 channels on a digital ISDN line. And since FaxPress and FaxPress Premier fax servers can work together on the same network, additional units can be added to the network at any time to handle increased fax demand.

**FaxPress for Business Faxing**

FaxPress network fax servers are ideal for small to medium-sized workgroups. To store its system files and faxes, FaxPress uses network storage such as a file server or workstation. FaxPress can be installed with any Microsoft Windows, Novell NetWare or Linux server and allows administrators to synchronize the FaxPress and network user database through Microsoft Active Directory Server Interfaces (ADSI), Novell Bindery and NDS. For Novell users, FaxPress provides a Single Sign On (SSO) capability that eliminates the need for users to juggle multiple passwords.

**FaxPress Premier for Enterprise Faxing**

Built on existing FaxPress features, FaxPress Premier Analog and FaxPress Premier Digital represent an advanced, state-of-the-art approach to network faxing for the enterprise market. Its patent-pending technology offers a number of enhanced features, including integrated file storage for system and fax data files, a multi-tasking embedded Windows Operating System and pre-installed FaxPress Premier server software. FaxPress Premier provides a very powerful and flexible software development kit allowing users to develop custom applications and production fax applications, and achieve the highest level of ROI.

**If You Can Print It, You Can Fax It**

Faxing from any application is as easy as printing when you use the Castelle FaxPress print driver. Attach documents in their native format to your fax and FaxPress will automatically convert them to fax format. The Fax Accumulate function acts like a virtual envelope, allowing users to easily send documents from various applications as one single fax message.

**Integrate with Company Databases**

The FaxPress software interface includes ODBC phone book support, which allows users to easily access any ODBC data source as a FaxPress phone book. Such databases include Microsoft Structured Query Language (SQL), Microsoft Access, Excel, and dBase among others.

**Castelle Internet Faxing**

Castelle Internet Faxing (CIF) allows fax transmissions between two or more FaxPress or FaxPress

Premier units on a network or through an intranet, extranet or internet connection. Fax messages travel over the IP network to a remote FaxPress user or to a final destination number.

**Fax Archiving**

The Fax Archive Service allows archiving and maintenance of all fax transmissions and transaction logs within any Access or Microsoft SQL database. For centralized storage and access, the Fax Archive Service can manage multiple FaxPress and FaxPress Premier units on a single database file.

**Microsoft Word Fax Merge**

Broadcast customized Microsoft Word documents to multiple recipients. The destination information, such as name and fax number, can be retrieved from Excel, Access, DBF files or from any ODBC-compatible data file.

**FaxPress Premier Benefits**

**Intel Dialogic Fax Boards and Multiple Intel Processors** Provides fast and reliable fax transmissions, worldwide compatibility and scalability

**Analog and Digital Environments** FaxPress Premier Analog provides up to 16 fax lines across four integrated fax modems; FaxPress Premier Digital provides up to 12 ISDN fax channels or up to 90 E1 fax channels

**Microsoft Windows Embedded Operating System** Multi-tasking and highly flexible server class

**Embedded Email Gateways** Send and receive faxes directly from the email client; no additional PC required

**Integrated File Storage** Internal hard disk stores system and fax job files

**Microsoft Office Integration** Send faxes directly from within Microsoft Office using the 'Send To' menu

**Secure Web Browser Interface** Use an Internet browser to perform Faxmain functions remotely

**Automated, Production Faxing** Supports easy deployment of automated, production faxing in almost any environment

**Microsoft Active Directory Integration** Manage Active Directory users and FaxPress Premier users from a central location

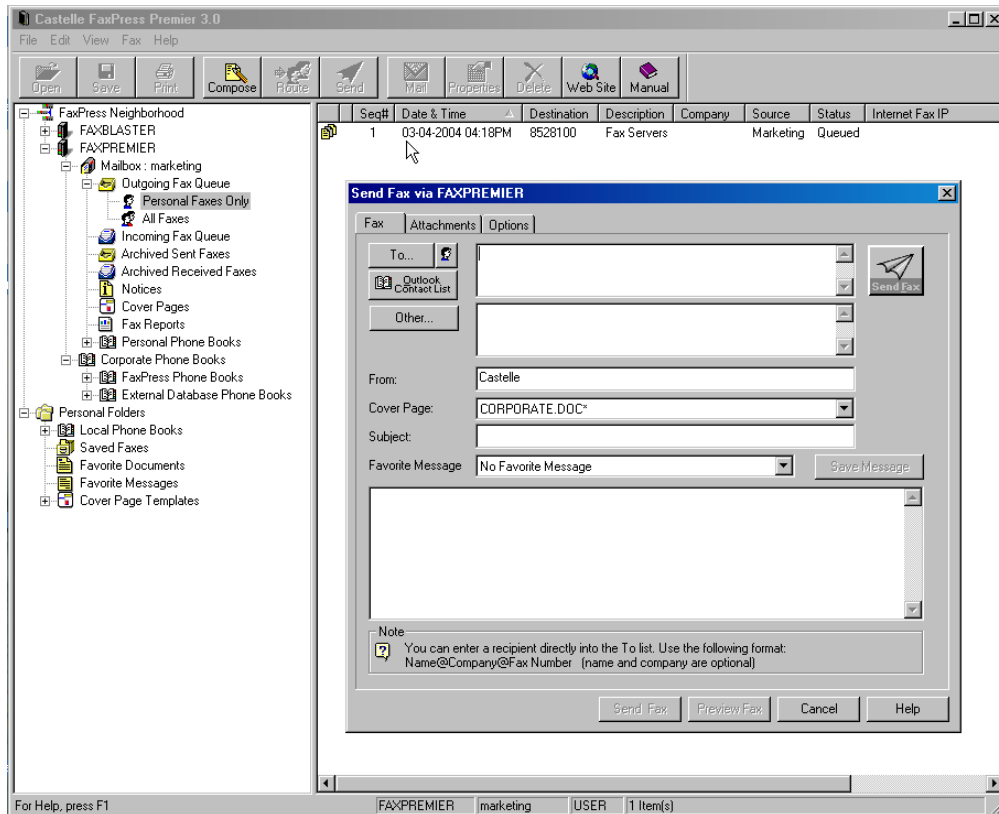
**Fax Reporting** Generate a variety of standard or customized reports for system and individual users

**Load Sharing** Efficient distribution of inbound and outbound faxes across all available channels allows multiple FaxPress Premier servers to be used concurrently

**Embedded Fax Archive** Database and archiving service that eliminates the need to keep copies of faxed documents

**Efficient Document Delivery** Fax forwarding, internal document routing and carbon copy capabilities

## A Complete Fax Solution



### Simple Fax Management

Castelle's client software, FaxMain™, displays the status of fax transmissions through color coding and flagged messages. SNMP support allows administrators to remotely monitor and reconfigure FaxPress units; with FaxPress Premier administrators can perform all administrative tasks through the Secure Web Browser Interface.

### Fax-to-Email Integration

Serving as a link between FaxPress and the network email system, the email gateways included in the FaxPress software package allow fax messages to be sent and received directly from a number of mail clients -- Microsoft Outlook, Lotus Notes, Novell GroupWise, and most SMTP-compliant mail systems. As a result, your company has the benefit of centralized fax and email management, while users have the convenience of a unified messaging environment. (The Email Gateway is not available with the FaxPress Small Business Edition.)

### Microsoft Exchange and Outlook

FaxPress provides two options for integration with Microsoft Exchange and Outlook. Castelle's Outlook Direct provides a direct link between the Outlook client and FaxPress, eliminating the need for an Exchange Server to send and receive faxes. The FaxPress Exchange Connector interfaces FaxPress to the Exchange Server, allowing access to the Exchange global address book and administrative tools.

### Integration with Lotus Notes

The native, VIM-based gateway for Lotus Notes provides email integration and also

allows for simple capture of Lotus Notes user information into existing phone books.

### Novell GroupWise and Other SMTP Compatible Email Systems

FaxPress offers a Simple Messaging Transport Protocol (SMTP) gateway that supports any SMTP compatible email system, including GroupWise. The SMTP gateway also supports intelligent load balancing when multiple FaxPress units are used for inbound or outbound faxing.

### Software Developers Kit

FaxPress provides an easy-to-use Software Developer Kit (SDK) for developers who want to incorporate fax capabilities into custom applications such as production faxing, broadcasting and e-commerce. The FaxPress Premier Web Services SDK provides the tools for developing customized fax applications, including production faxing, that are fully interoperable in .Net and Java environments.

### Production Faxing

FaxPress and FaxPress Premier support easy deployment of production faxing through the Drop Directory, allowing faxes to be sent without user intervention. The FaxPress DropFax utility creates an easily accessible directory for inbound faxes, allowing third party applications to retrieve the faxes stored there.

### Scan-to-Fax

Castelle fax servers offer a complete scan-to-fax solution by integrating with popular scanners and multi-function printers, such as

Hewlett Packard, Canon, Ricoh, Minolta, Konica, and Xerox.

### Document Management

Castelle partners with the following companies to offer a complete document management and imaging solution: Hewlett Packard, Cardiff, Laserfiche, Westbrook, Liberty IMS, Ricoh, Legato/OTG, and PlanetPress.

### Integration with PBX Systems

Castelle fax servers integrate with popular PBX systems including 3COM, Cisco, NEC, and Toshiba. For a complete list of compatible PBX systems, please visit our web site.

### Fax Directly from GoldMine

Castelle fax servers integrate with GoldMine to allow users to send faxes directly from their contact management software.

### Faxing from Accounting and Forms-based Applications

By integrating with FabSoft's Reform software, fax messages can be sent from popular accounting, financial and payroll systems.

#### FREE EVALUATION PROGRAM

Try FaxPress or FaxPress Premier in your network environment before you buy. For details, visit our web site at [www.castelle.com](http://www.castelle.com) or contact AMS at +44 (0) 1202 720012.

## Castelle Network Fax Servers



**FaxPress Premier Analog™  
& FaxPress Premier Digital™**



**FaxPress™**

FaxPress Model	Small Business Edition (SBE)	FaxPress 2500	FaxPress 5000	FaxPress 7000
<b>Part Number</b>	66298601-109	66298601-100	66298601-055 (4 line) 66298601-056 (8 line)	66298601-136
<b># of Fax Lines</b>	1	2	4 or 8	8
<b>Hardware</b>	Desktop	Desktop	Desktop	Rackmount
<b>Network Topology</b>	Ethernet 10/100 BaseT	Ethernet 10/100 BaseT	Ethernet 10/100 BaseT	Ethernet 10/100 BaseT
<b># of Users</b>	Up to 50	Up to 100	Unlimited	Unlimited
<b>Email Gateway</b>	Not Available	Included	Included	Included

FaxPress Premier Model	FaxPress Premier Analog	FaxPress Premier Digital E1	FaxPress Premier Digital ISDN
<b>Part Number</b>	66298601-243: 4 lines 66298601-219: 8 lines 66298601-220: 12 lines 66298601-221: 16 lines	66298601-266: 10 channels 66298601-223: 30 channels 66298601-224: 60 channels 66298601-225: 90 channels	66298601-202: 4 channels 66298601-215: 8 channels 66298601-216: 12 channels
<b># of Fax Lines</b>	Up to 16	Up to 90	Up to 12
<b>Hardware</b>	Rackmount	Rackmount	Rackmount
<b>Network Topology</b>	Ethernet 10/100 BaseT	Ethernet 10/100 BaseT	Ethernet 10/100 BaseT
<b># of Users</b>	Unlimited	Unlimited	Unlimited
<b>Email Gateway</b>	Embedded	Embedded	Embedded
<b>Secure Web Browser Interface</b>	Microsoft Windows, Novell NetWare, Linux/Unix, Apple Macintosh	Microsoft Windows, Novell NetWare, Linux/Unix, Apple Macintosh	Microsoft Windows, Novell NetWare, Linux/Unix, Apple Macintosh

**Castelle Headquarters**  
855 Jarvis Drive, Suite 100  
Morgan Hill, CA 95037 USA  
Tel: 408-852-8000  
Fax: 408-852-8100  
<http://www.castelle.com>

**AMS Ltd. (Europe & UK)**  
6a Wolverton Road  
Bournemouth BH7 6HT  
Tel: +44 (0) 1202 720012  
Fax: +44 (0) 1202 393114  
Email: [sales@ams-ltd.com](mailto:sales@ams-ltd.com)

© 2005 Castelle. All rights reserved. Castelle is a registered trademark. All other products and trademarks are the property of their respective owners. Specifications are subject to change.