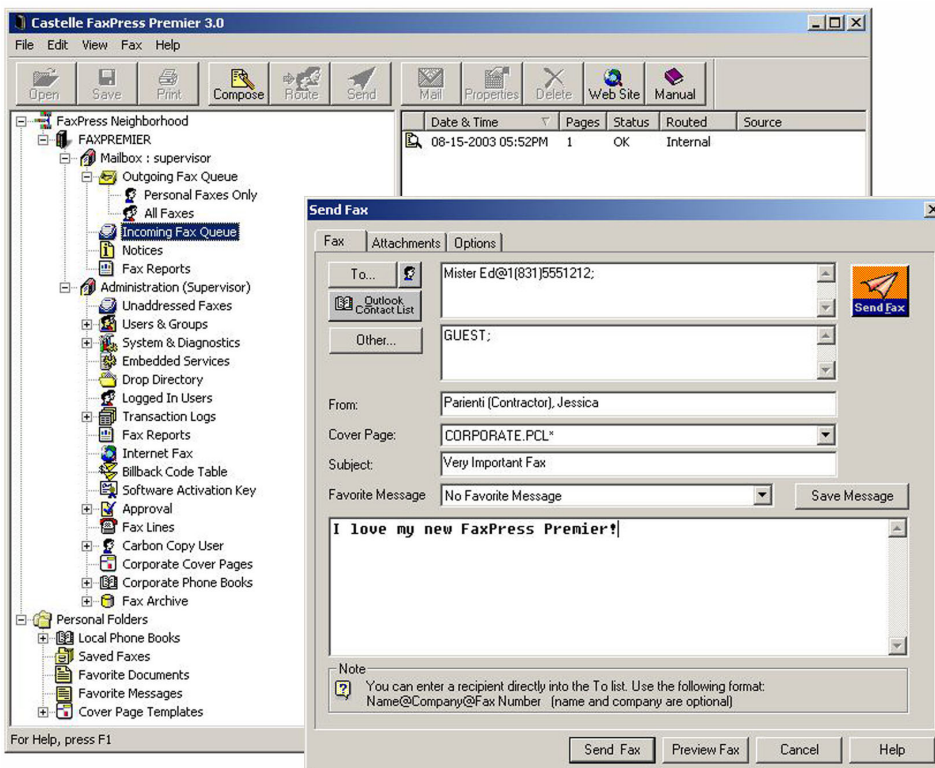


# FaxPress Premier™

## A New Generation of Network Fax Servers

An advanced network fax solution with enterprise-level capabilities



### FaxPress Premier Network Fax Software

Castelle's FaxPress Premier Analog and FaxPress Premier Digital fax servers represent an advanced, state-of-the-art approach to network faxing. Built on Castelle's fifteen years of network fax experience, FaxPress Premier's patent-pending technology offers a number of new, enhanced features making it a complete enterprise-level fax solution.

With integrated file storage for system and fax data files, a multitasking embedded Windows operating system and pre-installed FaxPress Premier server software, both the FaxPress Premier Analog and FaxPress Premier Digital can support users in Microsoft Windows and Novell NetWare network environments. Through the Secure Web Browser Interface and Web Services SDK, FaxPress Premier also supports Linux/Unix and Apple Macintosh users. FaxPress Premier provides a very powerful and flexible software development kit allowing users to develop custom applications and production fax applications, and achieve the highest level of ROI.

### FaxPress Premier Benefits

**Integrated Intel Dialogic Fax Boards** Provides fast and reliable fax transmission, worldwide compatibility and scalability

**Integrated File Storage** Internal 40GB hard disk stores system and fax job files

**Embedded Email Gateways** Send and receive faxes directly from the email client

**Microsoft Office Integration** Send faxes directly from within Microsoft Office using the Send To menu

**Secure Web Browser Interface** Use an Internet browser to perform Faxmain functions remotely

**Automated, Production Faxing** Supports easy deployment of automated, production faxing in almost any environment

**Fax Reporting** Generate a variety of graphical reports for system and individual users

**Load Sharing** Efficient distribution of inbound and outbound faxes across all available channels

**Embedded Fax Archive** Database and archiving service that eliminates the need to keep copies of faxed documents

**Efficient Document Delivery** Fax forwarding, internal document routing and carbon copy capabilities

## FaxPress Premier Specifications

### FaxPress Premier Highlights

- Embedded Email Gateways
- Internal Hard Disk for Storage
- Microsoft Windows Embedded Operating System
- Secure Web Browser Interface
- Web Services SDK
- Enhanced Drop Directory
- Microsoft Active Directory Integration
- Fax Reporting
- Load Sharing
- Backward Compatibility
- Single Sign On for Microsoft and Novell NDS Users



**Contact Castelle Sales at (800) 289-7555 to request a free white paper and ask how you can try FaxPress Premier in your network environment for 30 days.**

Feature	FaxPress Premier Analog	FaxPress Premier Digital
Intelligent Fax Board	Intel Dialogic CPI-400B2	Intel Dialogic CPI-24001-T1PCIU
# of Fax Channels	8, 12 or 16	24, 48 or 72
Operating System	Windows Embedded OS SAK 2.0	Windows Embedded OS SAK 2.0
Internal Hard Disk	40 GB	40 GB
# of Users	Unlimited	Unlimited
Internal Memory	256 MB	256 MB
Product Dimensions	3.5" H x 19" W x 17.3" D	3.5" H x 19" W x 17.3" D
Network Topology	10/100Base-T Fast Ethernet RJ-45	10/100Base-T Fast Ethernet RJ-45
Error Correction Mode	Yes	Yes
LCD Display	1	1
Dialing Method	Tone or Pulse	Tone or Pulse
Email Integration	Included	Included
PBX and Automatic Inbound Routing	Yes	Yes
Fax Compatibility	ITU-T Group 3 T.4, T.6 and T.30	ITU-T Group 3 T.4, T.6 and T.30
Fax Connection	RJ-11C	RJ-48C
Faxmain Client	Microsoft Windows, Novell Netware	Microsoft Windows, Novell Netware
Web Browser Interface	Microsoft Windows, Novell Netware, Linux/Unix, Apple Macintosh	Microsoft Windows, Novell Netware, Linux/Unix, Apple Macintosh
Web Services Programming (SDK)	Microsoft Windows, Novell Netware, Linux/Unix, Apple Macintosh	Microsoft Windows, Novell Netware, Linux/Unix, Apple Macintosh
Warranty	1 year hardware (parts and labor); 60 days software and technical support For assistance beyond 60 days, Castelle offers an Extended Support Program. Contact Sales for details at (800) 289-7555.	

#### Castelle

855 Jarvis Drive, Suite 100  
Morgan Hill, CA 95037  
Tel: 800-289-7555 / 408-852-8000  
Fax: 408-852-8100  
<http://www.castelle.com>

©2003 Castelle. All rights reserved. Castelle is a registered trademark of Castelle.  
All other products and trademarks are the property of their respective owners.  
Specifications are subject to change without notice.