

Castelle FaxPress eCopy Connector

User Guide

Oct 23, 2004

Overview

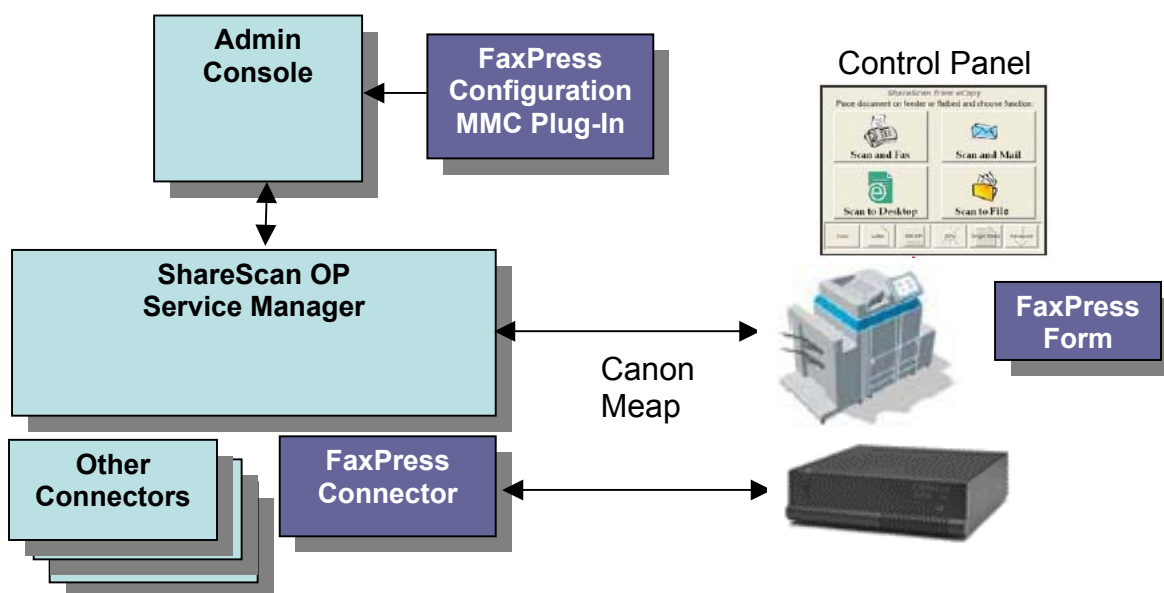


Figure 1: Architecture

eCopy architecture includes a number of components:

- ShareScan OP Service Manager –A windows service that communicates with different input and output devices through the use of connectors
- Admin Console – An administration console used to configure the properties of each of the connectors
- Control Panel forms – Each device displays its own user interface on the copier or eCopy server control panel.

Installation

Run the InstallShield program on the same machine that the ShareScan OP Service Manager is installed. You need to install the FaxPress client before installing the eCopy connector. Follow the installation wizard instruction; you will be prompted to select an installation directory. Once the installation is complete, the connector is installed and registered and is ready to be configured through the administration console.

Administration

Launch the shareScan OP administration Console. You will see the FaxPress connector on the list of available connectors. Select the FaxPress Connector.

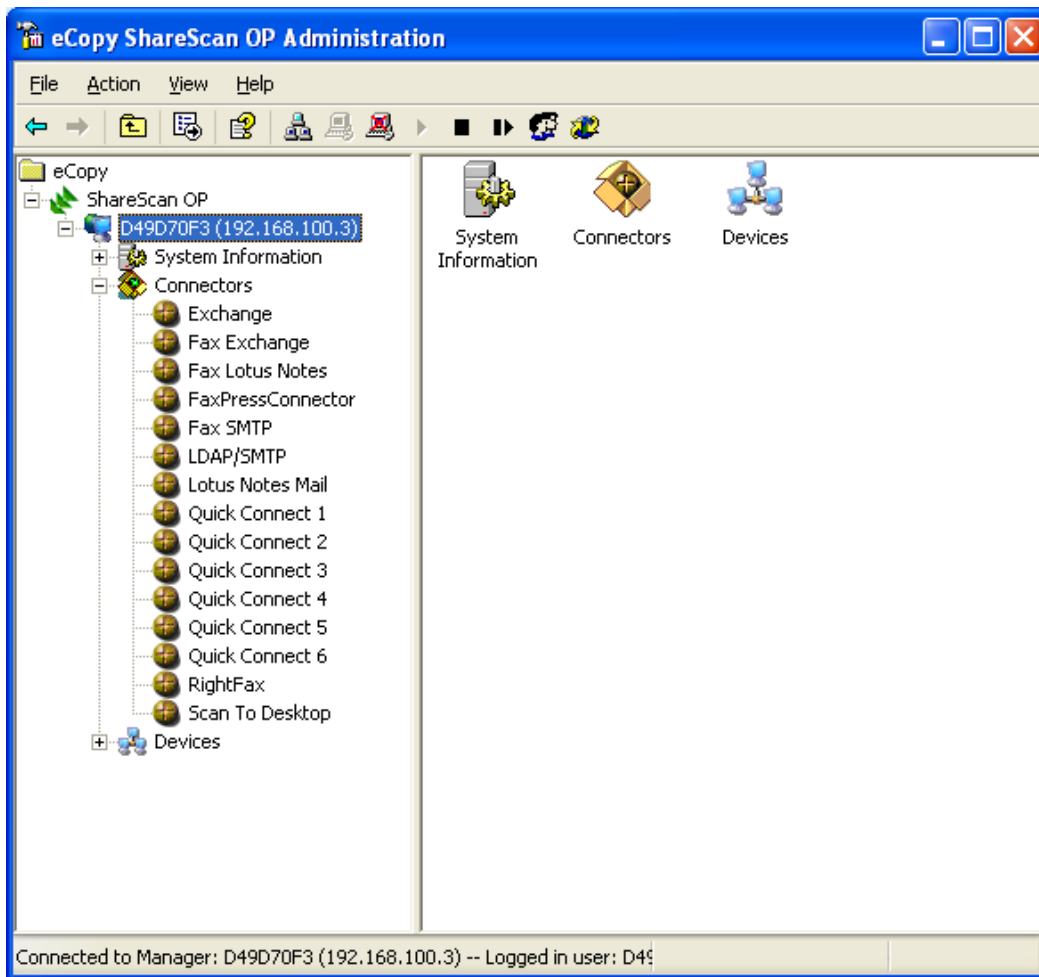


Figure 2: ShareScan OP Administration Console

In the display tab select the bitmap (GIF file) that you want to associate with FaxPress. A default bitmap is provided by Castelle. This is the icon that will appear on the control panel to represent FaxPress Fax server.

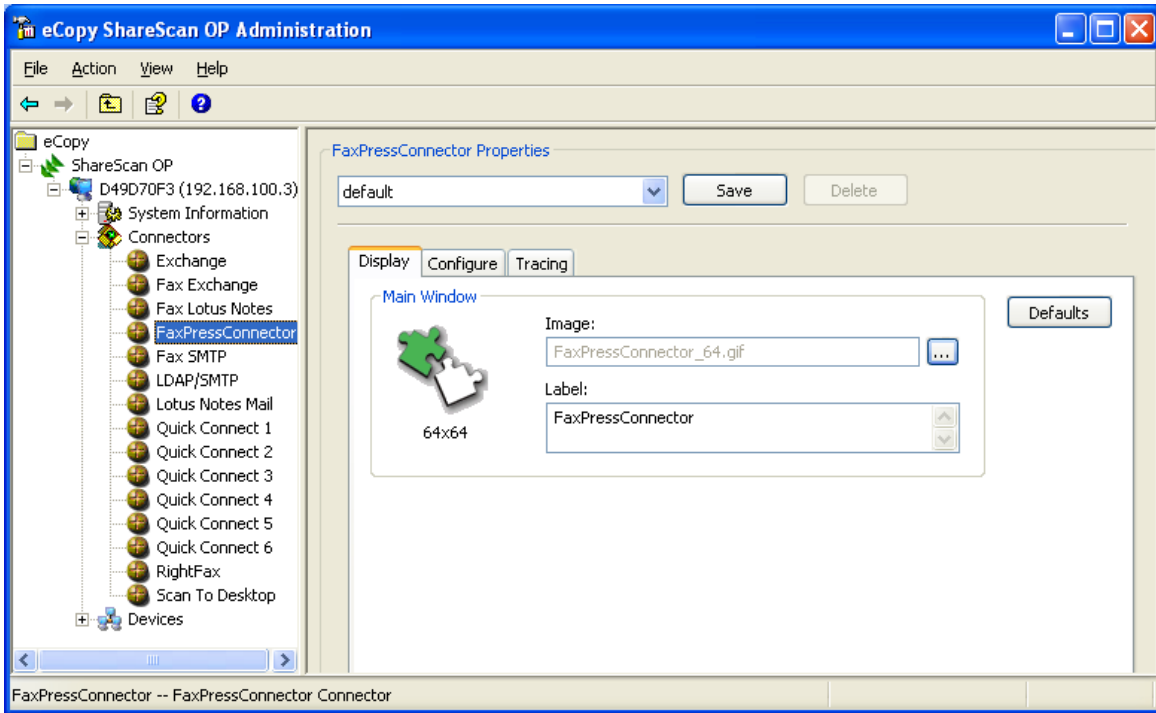


Figure 3: Display Tab

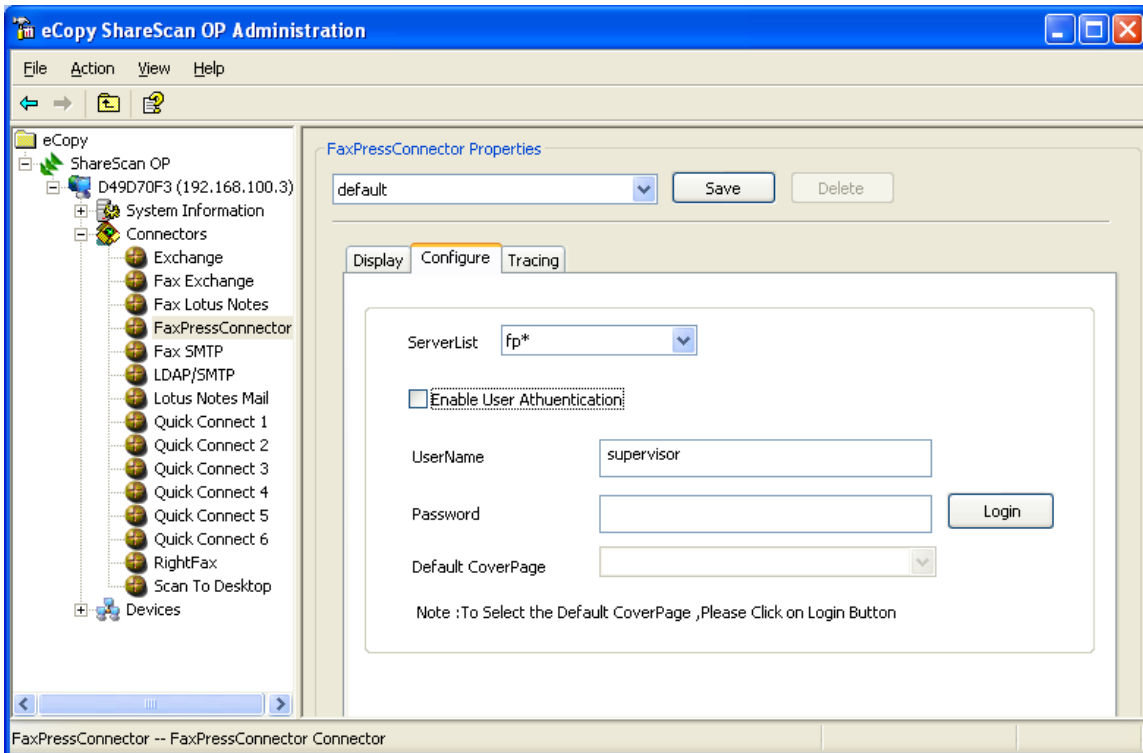


Figure 4: Configuration tab

If you have more than one server, select the select the FaxPress server to use.

The connector is design to work in one of two modes:

- Shared account – In this mode all users using the copier to scan and fax will be using one shared account. They will not be prompted to login and will not be able to use their own personal cover pages. If you wish to use this mode, create an account on FaxPress for the eCopy connector and select this account here. Enter the account name and password and click the login button to verify that the connector is able to successfully login to FaxPress. This means that the system is configured properly and the client can find and login to the server.
- Individual accounts – In this mode each user will use their own personal account and will be prompted to login when they want to scan and fax from the copier. If you wish to use this mode check the “User Authentication” button.

You can also select the default cover page that users will be using to fax the scanned documents. Only corporate cover pages can be selected through this configuration. To retrieve the list of corporate cover pages, please make sure to login to the server first. This will populate the list with the available cover pages and allow you to select the default one.

Note: make sure to click the “save profile” button before attempting to login.

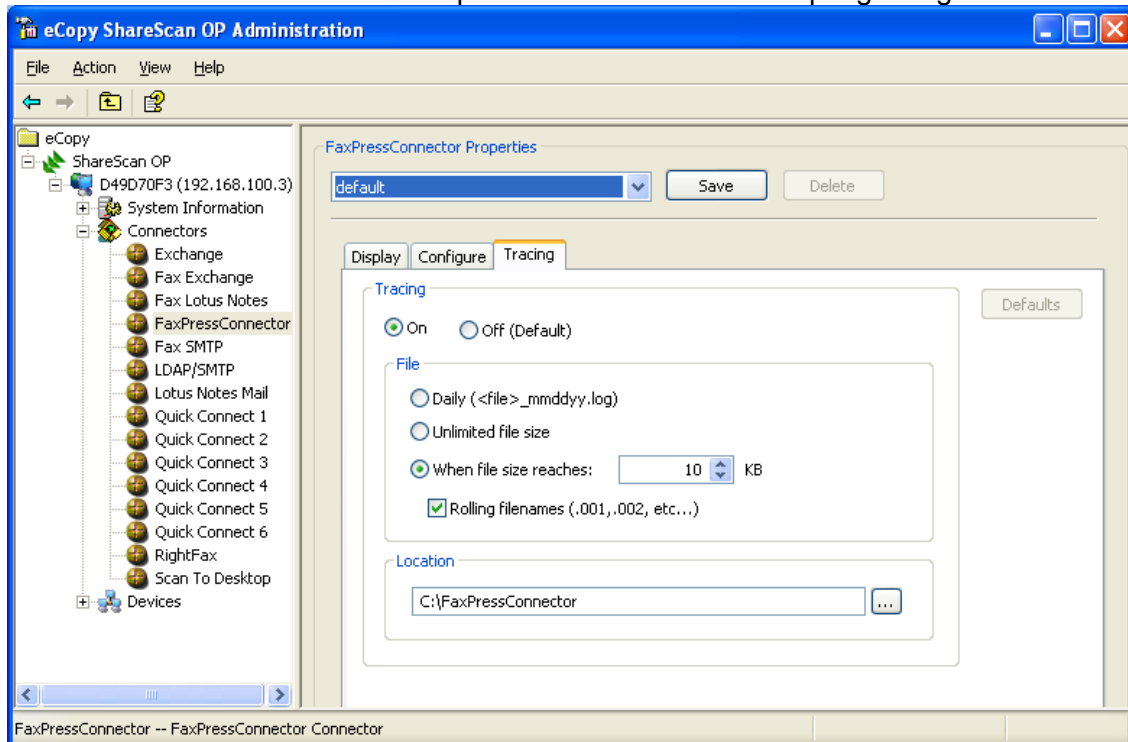


Figure 5: Tracing tab

The tracing tab allows you to select the log file where all the transactions will be logged. It also allows you to select the frequency and the way these log files are created. You have a choice between:

- Daily – A new log file is created each day
- Unlimited File size – The connector will always use the same log file, no matter what the size is.
- When the size reaches a certain size – A new log file is created only when the previous file reached a given limit.

Once you are done configuring the connector save the configuration. If you multiple configuration you can choose different names for each profile.

Control Panel



Figure 6: Control panel

Figure 6 shows the copier control panel. When the user clicks the FaxPress, depending on the authentication mode they will be either prompted to login or presented with the scan and fax user interface.

Sullivan Engineering

PROJECT: Site Development: Swanson Business Park
 Construction Cost - Site Construction
 TIMEFRAME: Winter 2002

Assumptions					
Repair Fee	7,800				
Production Overhead	4,00%				
General Contractor's Fee	6,00%				
Contingency	7,00%				
Contributions Budget			Cost		
			Square Foot		
Permit	\$ 1,435		\$ 0,28		
Surveying/Plot	4,035		0,54		
Drainage/Soil Treatment	32,955		4,48		
Foundation/Concrete	47,350		8,48		
Masonry	83,054		9,88		
Utilities	24,416		3,38		
Storm Sewer	14,185		1,92		
Framing Lumber	21,865		2,98		
Roof Trusses	28,855		4,04		
Roofing	15,546		2,15		
Outlets	3,255		0,45		
Metal Studs	4,302		0,58		
Doors and Windows	23,342		3,15		
Insulation	7,387		0,98		
Drywall	35,412		4,73		
Floor	18,748		2,58		
Cabinets and Countertops	7,255		0,98		
Painting	5,585		0,75		
Tile and Ceramic Work	25,492		3,43		
Ceiling	18,425		2,48		
Electrical	55,442		7,55		
Plumbing	94,025		12,55		
Carpentry	38,485		5,18		
HVAC	77,385		10,43		
Misc Labor	3,455		0,47		
Fire Alarm/Security System	8,488		1,18		
Speakers	28,285		3,83		
Curb/Driveway	15,275		2,05		
Landscaping	8,718		1,15		
Fence	18,382		2,48		
Tree Removal	2,085		0,28		
Temp Utilities	3,385		0,45		
Subtotal	895,128		\$ 93,28		
Contingency	65,285		8,75		
Subtotal	960,413		\$ 102,03		
Production Overhead	52,537		7,05		
Gen Contractor's Fee	58,535		7,85		
Total	1071,485		\$ 111,93		

Sullivan Engineering 5886 Hemmingway Park Madison, MO 63734 888-665-5678

Navigation buttons: Send, Scan More, Cancel, Settings, Advanced

Figure 7: Scan and Fax

Once the scan operation is completed, click the send button to fax the document:

Send

From: supervisor

To: [Empty field]

Subject: [Empty field]

BillCode: [Empty field]

CoverPage: No CoverPage

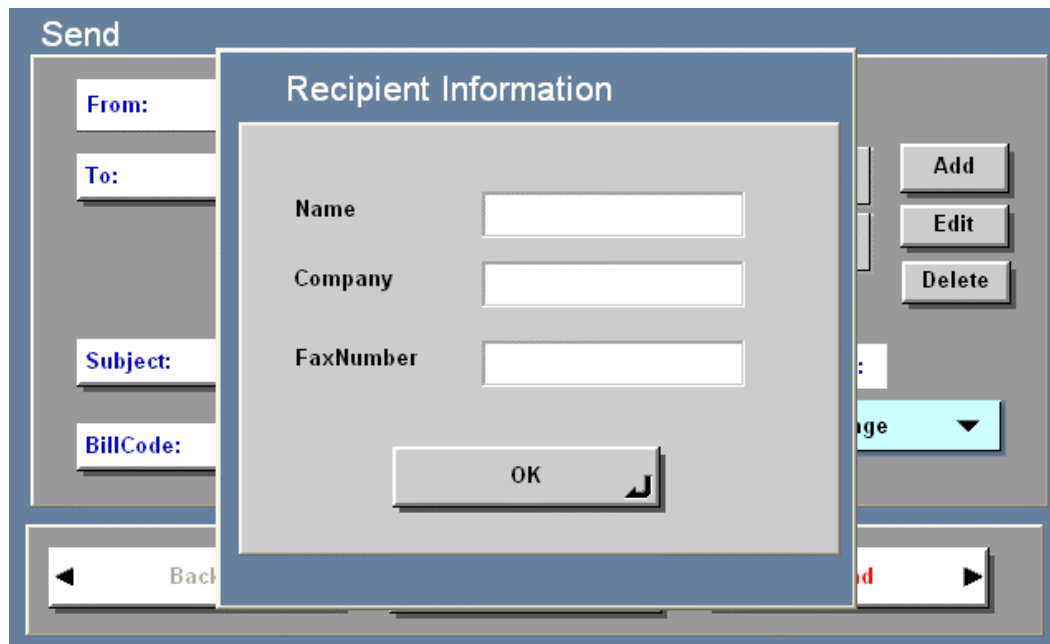
Buttons: Add, Edit, Delete

Bottom navigation: Back, Cancel, Send

Figure 8: Fax Form

In the fax form fill in the fields that will show up on the cover page.

- From - In the “From” field enter the user name. If the user logged in to the system their name (or the account name) will be displayed by default. If they use a “Shared account” the account name will be displayed and the user can modify it and enter their own name to be written on the cover page.
- To – This is the recipient list. To add recipient click on the add button. The following form is displayed:



The image shows a software interface for sending a fax. A central dialog box titled "Recipient Information" is open, containing three input fields: "Name", "Company", and "FaxNumber", each with a text box. Below these fields is an "OK" button. To the right of the dialog, there are three buttons: "Add", "Edit", and "Delete". The background interface, titled "Send", includes fields for "From:", "To:", "Subject:", and "BillCode:". There is also a dropdown menu for "Cover page" and a "Send" button at the bottom right. A "Back" button is visible at the bottom left.

Enter the recipient name, company name and fax number. Only the fax number is mandatory, the other fields are optional.

Each entry will show up in the list as:

Recipient Name @ Company Name @ Fax Number

You can delete entries from the list or modify them by clicking the “Edit” button.

- Subject – This will show up in the subject field on the cover page
- Bill back code – Enter the bill back code to associate with this fax
- Cover page – Select the cover page to use. If you logged in to the system, you will be able to select between corporate and your own personal cover pages. Otherwise only corporate cover pages can be selected.

When you're done entering the information select the send button to fax the document.