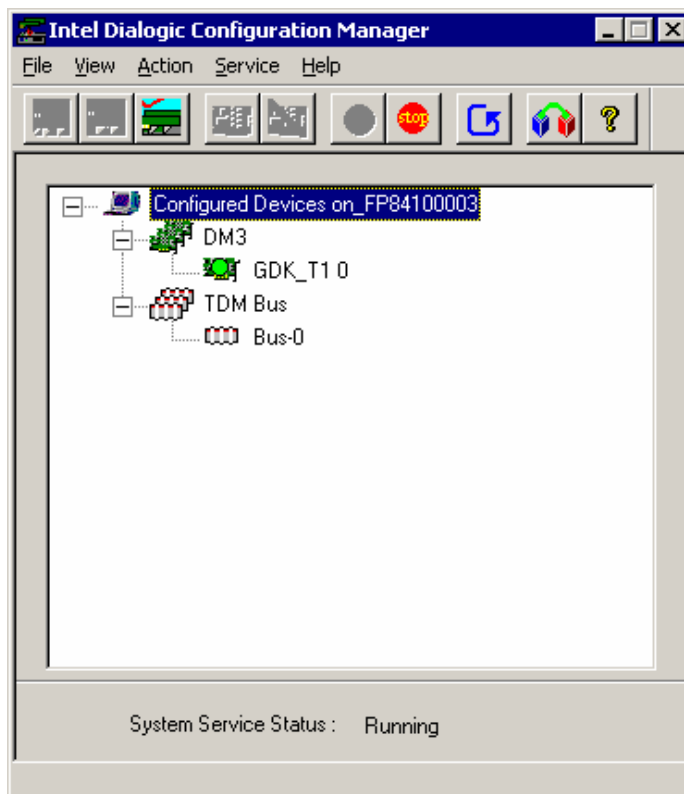


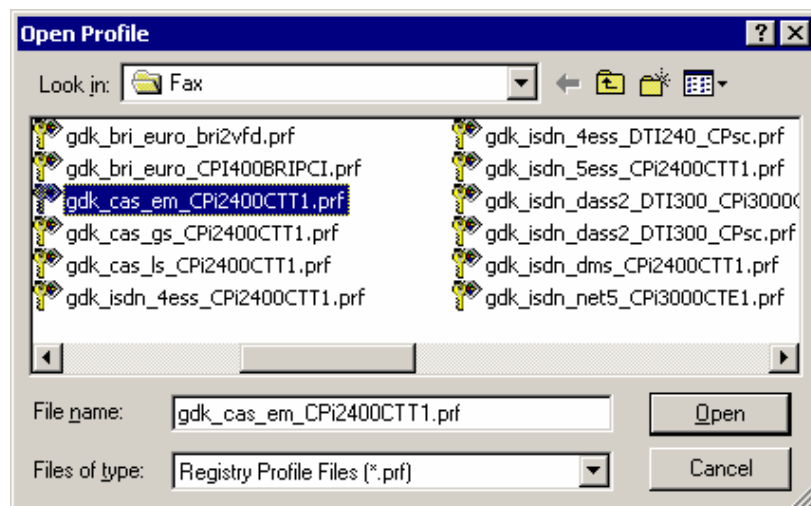
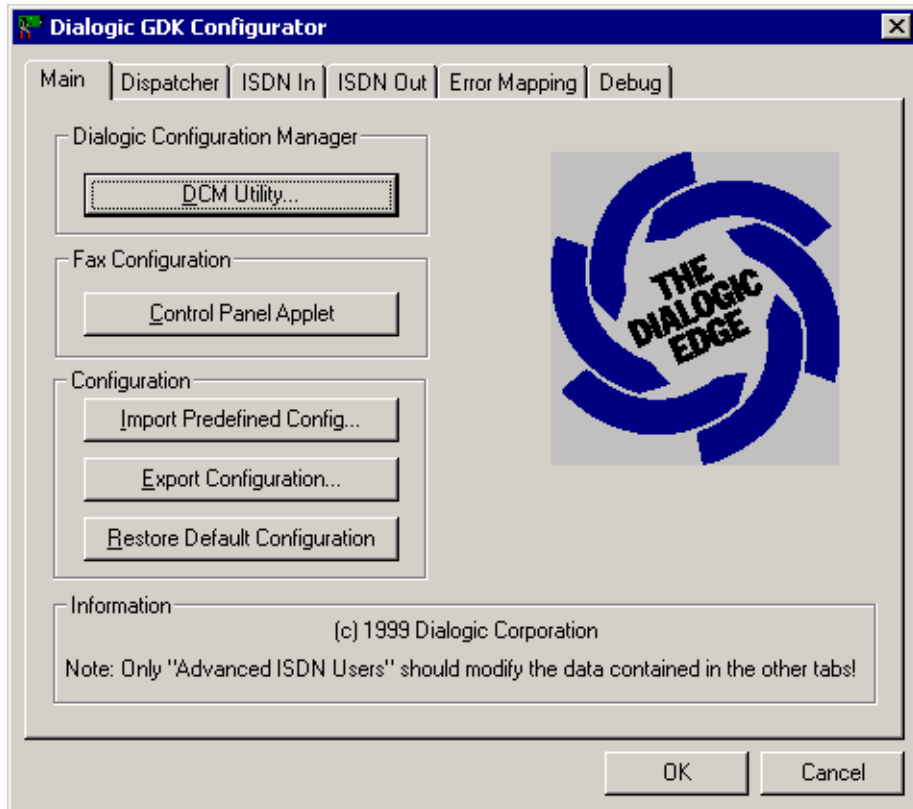
Title Changing a digital board configuration**Process**

1. Stop all Castelle services.
2. Stop the GammaLink System Service and Dialogic System Service.
3. Using Explorer, go to C:\Program Files\Dialogic\Data directory, find the CONFIG, PCD, and FCD files, and make a copy of them. Use Notepad to open and modify the CONFIG file.
4. Open the command-prompt and change directory to C:\Program Files\Dialogic\Bin. Type "fcdgen c:\program files\dialogic\data\filename.config" (the filename.config is the one you just modified in item #3). It will generate a new FCD file (filename.fcd).
5. Launch **Program Folders>Intel>Dialogic System Software>Configuration Manager- DCM**. Highlight **Configured Devices on computer_name**, right-click it then select **Restore Device Defaults**. It will re-scan the board and let you select the right FCD file. Select the right FCD file and click **OK**.
6. The file will reload the new FCD file. Highlight the board **GDK_T10**, then click **Start**.



7. Launch **Program Folders>Intel>Dialogic System Software>Configure GDK**, click **Control Panel Applet**, then **Auto Detect**. (Click **OK** on prompt warning message.) Verify that the right number of fax channels are displayed.
8. Click **OK** to exit Auto detect.

9. Click **Import Predefined Config...**, select the .prf file that specifically matched your T-1 line, then click **Open**.



10. Select the number of T-1 trunks (default is 1 for one T-1 line) and click **OK**.



11. Click **OK** to exit Configure GDK.
12. Start the GammaLink System Service, then start all Castelle services.

Disclaimer

The Origin of this information may be internal or external to Castelle. Castelle makes all reasonable efforts to verify this information. However, the information provided in this document is for your information only. Castelle makes no explicit or implied claims to the validity of this information. Castelle reserves the right to change, without notice, product offerings or specifications and the information in this document.

Any trademarks referenced in this document are the property of their respective owners. Consult your product manuals for complete trademark information.