

# Integration of Your FaxPress SBE, 2500, 5000, 7000 with Intertel Axxess

This document applies to:

Product(s): FaxPress SBE, 2500, 5000, 7000

Last Revised: 04/17/03

## DESCRIPTION

There are two different scenarios that can be used to configure the Inter Tel Axxess for DID routing. The first scenario is for a customer that needs just a few incoming DID numbers for faxing. The second scenario is for customers who require larger amounts of DID numbers.

### Scenario 1

Use a phantom extension and a Voice Computer Hunt Group.

1. Create a phantom extension number for each incoming number (example 408-852-9180 phantom extension will be 8180)
2. Create 1 Voice Computer Hunt Group that contains all of the fax server ports (Example 2000)
3. Manually forward the Phantom Extension to the Voice Computer Group. (This can be done without a physical phone on Axxess Ver 4.3+)  
Dial feature code 359 (Remote Station programming)  
Enter the phantom extension number (8180)  
Enter the station password (8180 by default)  
Enter the feature code 355 (Forward all calls)  
Enter the extension number of the FaxPress Hunt Group (2000)
4. Program the correct DID to ring the phantom extension. When a call comes in on 408-852-8180 the phantom extension will forward the call to the hunt group. When the FaxPress answers the Axxess will echo the digits of the phantom extension number that forwarded the call and the FaxPress can match that number with the Mailbox ID of the corresponding FaxPress User.

The following process can be repeated for each additional DID number you want to add.

### Equipment required to complete scenario 1

5- Feature units (PAL) for Voice Computer Hunt Groups (May require a PAL Upgrade)

1- Available Hunt Group

Enough single line ports to accommodate the number of Fax Ports. (May require additional Hardware)

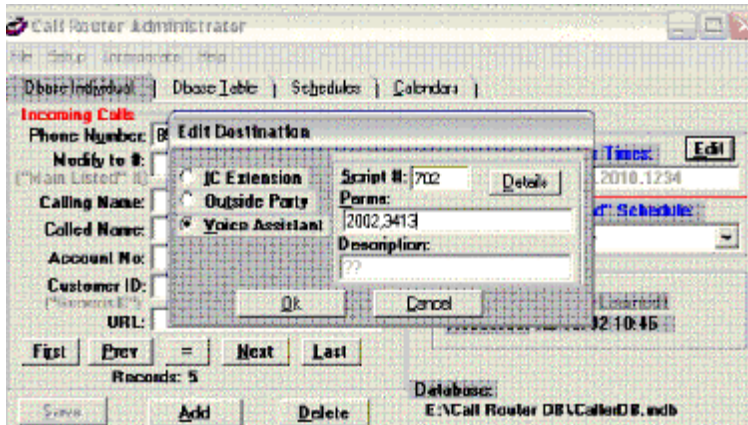
Available Phantom Ports. (Be sure not to exceed the total number of ports your CPU will allow) (May require CPU upgrade)

An appropriate number of DTM receivers. (May require additional DSP chips)

Second scenario for automatic routing of inbound faxes using the Inter-Tel Axxess

This scenario requires the use of the Oaisys Call Router and Voice Assistant to route calls to the FaxPress server. (Requires Oaisys Net Server, Call Router, and Voice Assistant Software)

1. You must program a Voice Assistant Script that will transfer the call to the Fax Server Voice Computer Hunt Group and echos the digits.
2. Program each incoming fax number into the Call Routing Database and program Call Router to send calls to the correct Voice Assistant Script. Include the extension number of the Voice Computer Hunt Group for the FaxPress Server and the digits to echo to the server.



3. Program the Axxess to send all incoming calls on the desired DID numbers to the Call Router Phantom.

When an incoming call comes in on the T-1, PRI or Analog trunk to the Axxess the Axxess will send the programmed numbers to the Call Router Phantom. Call Router will take the call and transfer it to the defined Voice Computer Hunt Group and echo the digits to the server when it answers. FaxPress can then route the incoming fax to the appropriate FaxPress users Mailbox.

The above scenario is much more costly and complicated to setup, but allows for a simple way to route basically an indefinite number of different fax numbers to the FaxPress.

Both scenarios require the appropriate number of Analog (Single Line) Ports to accommodate the FaxPress ports.

The customer must also have an extra 5 units of PAL to allow the use of Voice Computer Hunt Groups.

#### Equipment required to complete scenario 2

5- Feature units (PAL) for Voice Computer Hunt Groups (May require a PAL Upgrade)

1- Available Hunt Group

Enough single line ports to accommodate the number of fax ports and Voice Assistant Ports. (May require additional hardware)

1- Phantom port for Call Router. (Be sure not to exceed the total number of ports your CPU will allow) (May need CPU upgrade)

An appropriate number of DTMF receivers. (May require additional DSP chip)

Oaisys Net Server Software. ( Also requires 30 additional feature units, PAL)

Oaisys Voice Assistant Software.

Oaisys Call Router software.

Dialogic Card for call transfer (Voice Assistant licenses are based on number of ports)

PC to run all Oaisys applications.

#### **DISCLAIMER**

The Origin of this information may be internal or external to Castelle. Castelle makes all reasonable efforts to verify this information. However, the information provided in this document is for your information only. Castelle makes not explicit or implied claims to the validity of this information. Castelle

reserves the right to change, without notice, product offerings or specifications and the information in this document.

**Any trademarks referenced in this document are the property of their respective owners. Consult your product manuals for complete trademark information.**